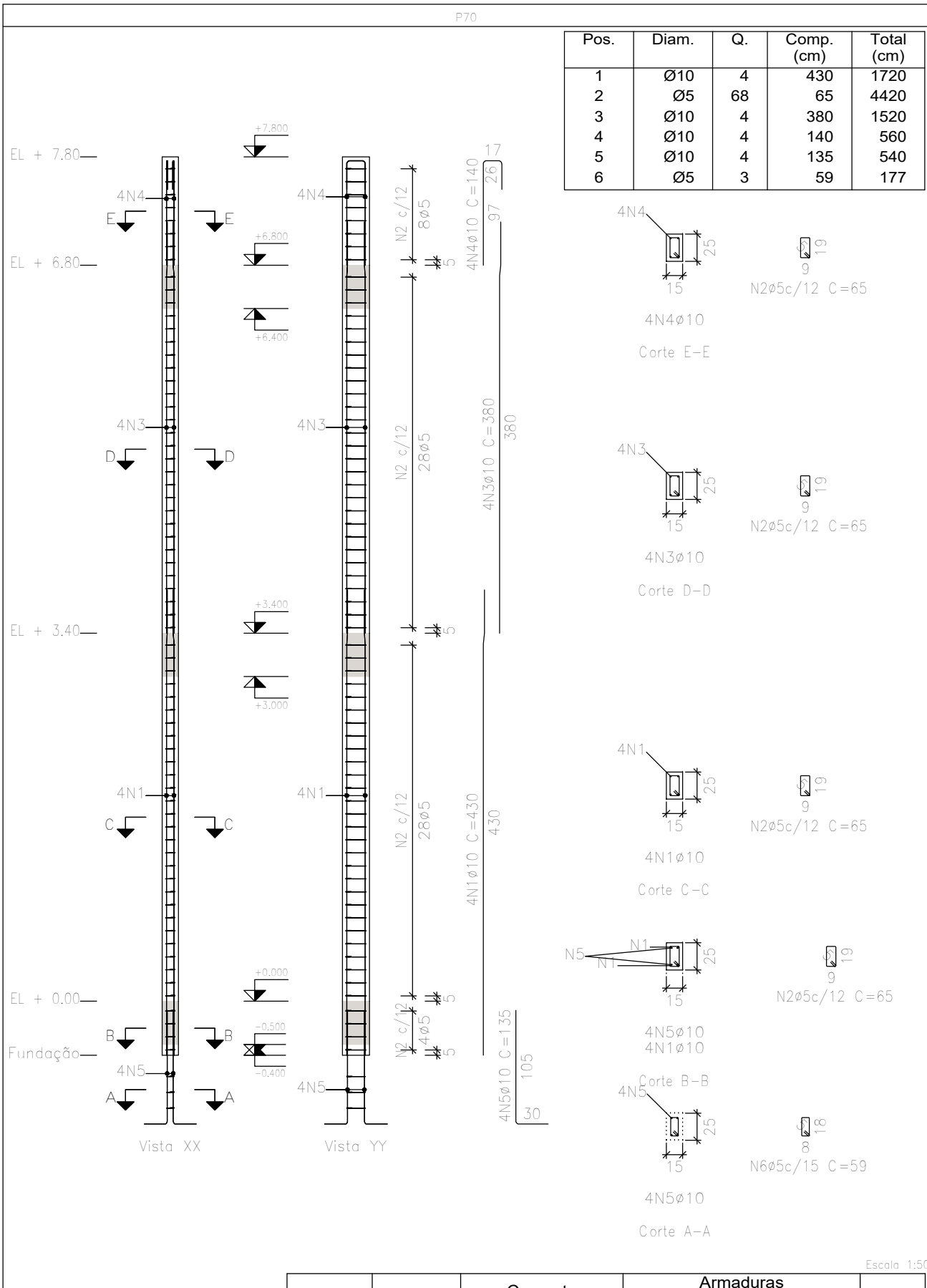
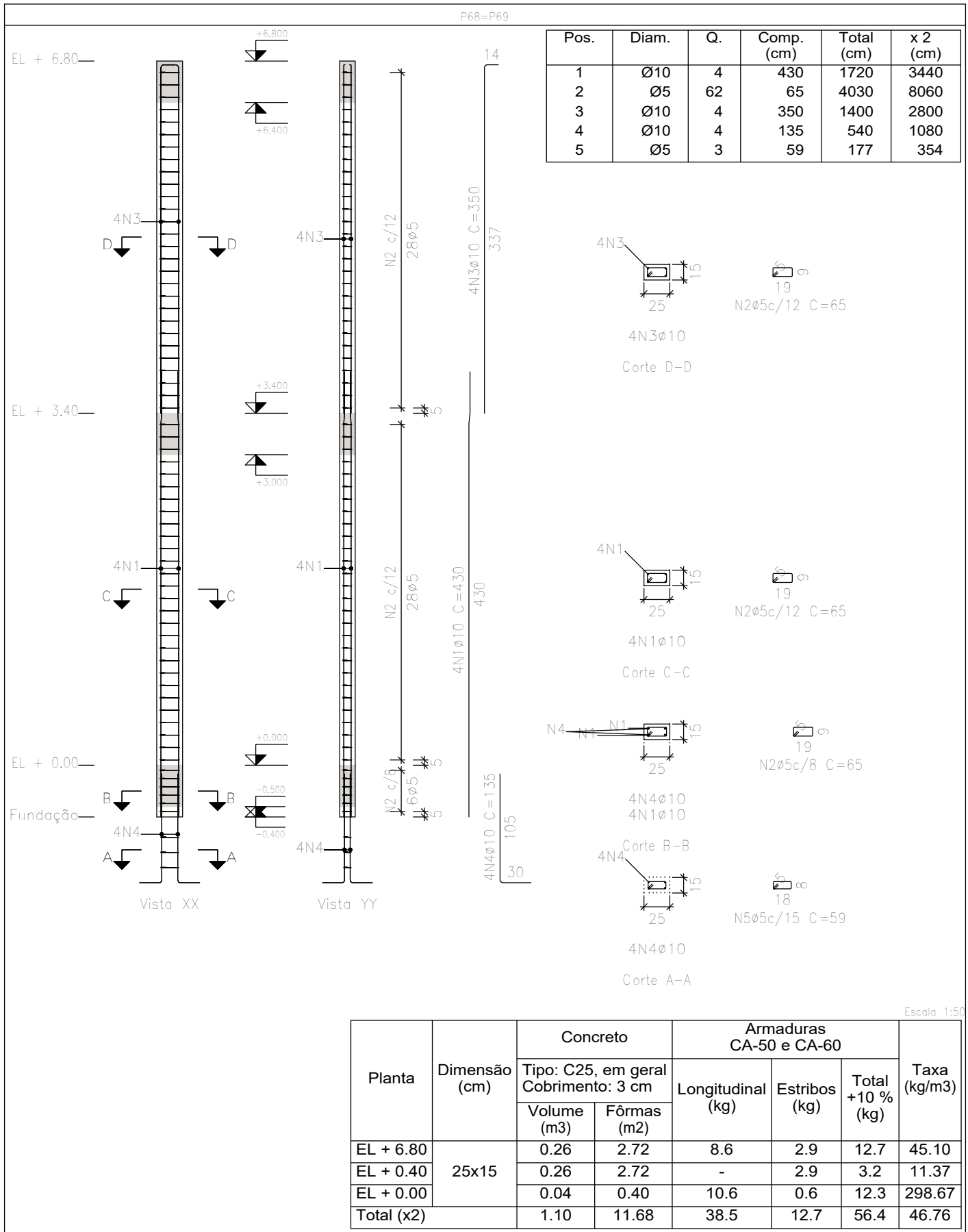
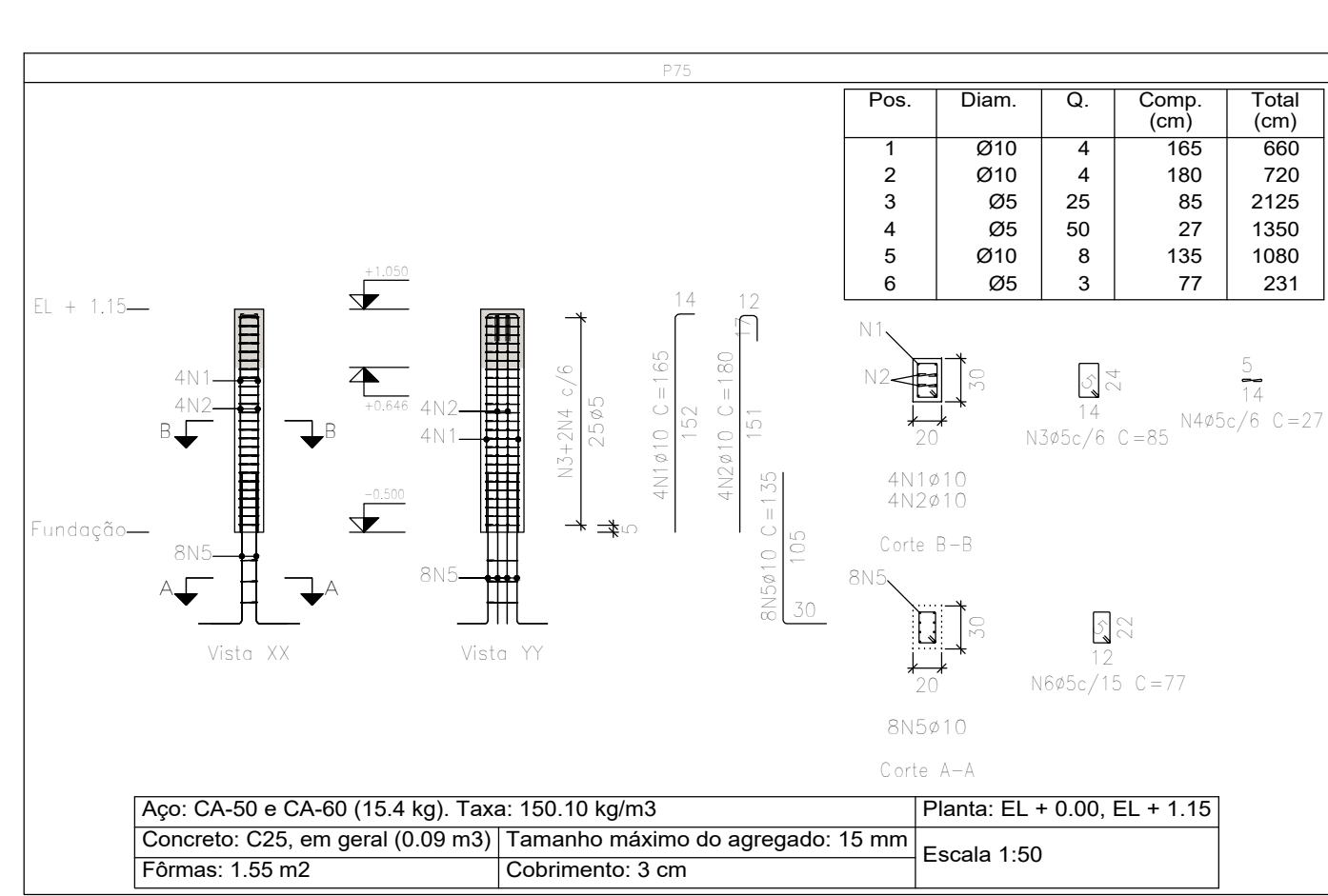


Elemento	Pos.	Diam.	Q.	Esquema	Comp. (cm)	Total (cm)	CA-50 (kg)	CA-60 (kg)
P68+P69	1 Ø10	4			380	1720	10.6	
	2 Ø5	62			65	4030		6.3
	3 Ø10	4			350	1400	8.6	
	4 Ø10	4			135	540	3.3	
	5 Ø5	3			59	177		0.3
					Total+10% (x2)	24.8	7.3	14.6
P70	1 Ø10	4			380	1720	10.6	
	2 Ø5	68			65	4420		6.9
	3 Ø10	4			380	1520	9.4	
	4 Ø10	4			140	560	3.5	
	5 Ø10	4			135	540	3.3	
					Total+10% (x2)	29.5	7.9	0.3
P75	1 Ø10	4			192	660	4.1	
	2 Ø10	4			180	720	4.4	
	3 Ø5	26			85	2125		3.3
	4 Ø5	50			27	1350		2.1
	5 Ø10	8			135	1080	6.7	
					Total+10% (x2)	6.4	0.3	
P76	1 Ø10	4			198	840	5.2	
	2 Ø6.3	39			73	2847		7.0
	3 Ø10	4			135	540	3.3	
	4 Ø5	3			66	198		0.3
					Total+10% (x2)	17.1	0.3	
P77	1 Ø10	4			125	500	3.1	
	2 Ø5	9			73	657		1.0
	3 Ø10	4			140	560	3.5	
	4 Ø5	3			67	201		0.3
					Total+10% (x2)	7.3	1.4	
P79	1 Ø12.5	4			125	500	4.8	
	2 Ø10	2			125	250	1.5	
	3 Ø8	21			72	1512	6.0	
	4 Ø8	21			441	441	1.7	
	5 Ø12.5	4			135	270	1.7	
	6 Ø10	2			135	270	1.7	
	7 Ø6.3	3			63	189	0.5	
					Total+10% (x2)	23.8		
P80	1 Ø10	4			95	380	2.3	
	2 Ø5	7			73	511		0.8
	3 Ø10	4			135	540	3.3	
	4 Ø5	3			67	201		0.3
					Total+10% (x2)	6.2	1.2	
P81	1 Ø10	4			240	960	5.9	
	2 Ø5	42			73	3066		4.8
	3 Ø10	4			135	540	3.3	
	4 Ø5	3			67	201		0.3
					Total+10% (x2)	10.1	5.6	
P82	1 Ø10	4			255	1020	6.3	
	2 Ø10	2			260	520	3.2	
	3 Ø5	20			73	1460		2.3
	4 Ø5	20			420	21	0.7	
	5 Ø10	6			135	810	5.0	
					Total+10% (x2)	6.5	195	0.3
P83	1 Ø10	4			387	1600	9.9	
	2 Ø5	34			73	2482		3.9
	3 Ø10	4			135	540	3.3	
	4 Ø5	3			67	201		0.3
					Total+10% (x2)	14.5	4.6	
					Ø5: 0.0	45.6		
					Ø6.3: 8.3	0.0		
					Ø8: 8.5	0.0		
					Ø10: 16.2	0.0		
					Ø12.5: 11.2	0.0		
					Total: 190.8	45.6		

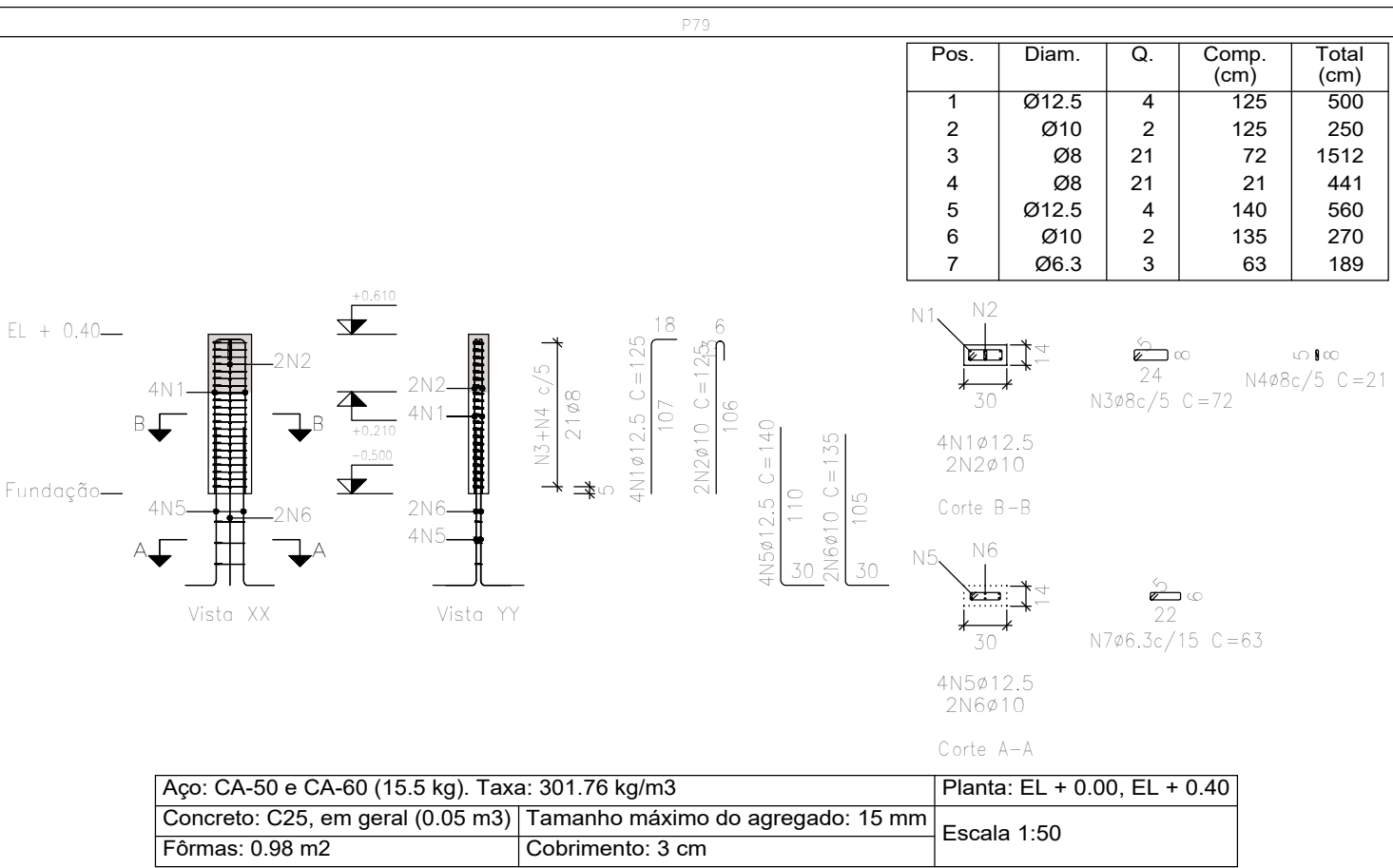
ARMAÇÃO DOS PILARES PARTE 10/26 ESCALA: 1/50



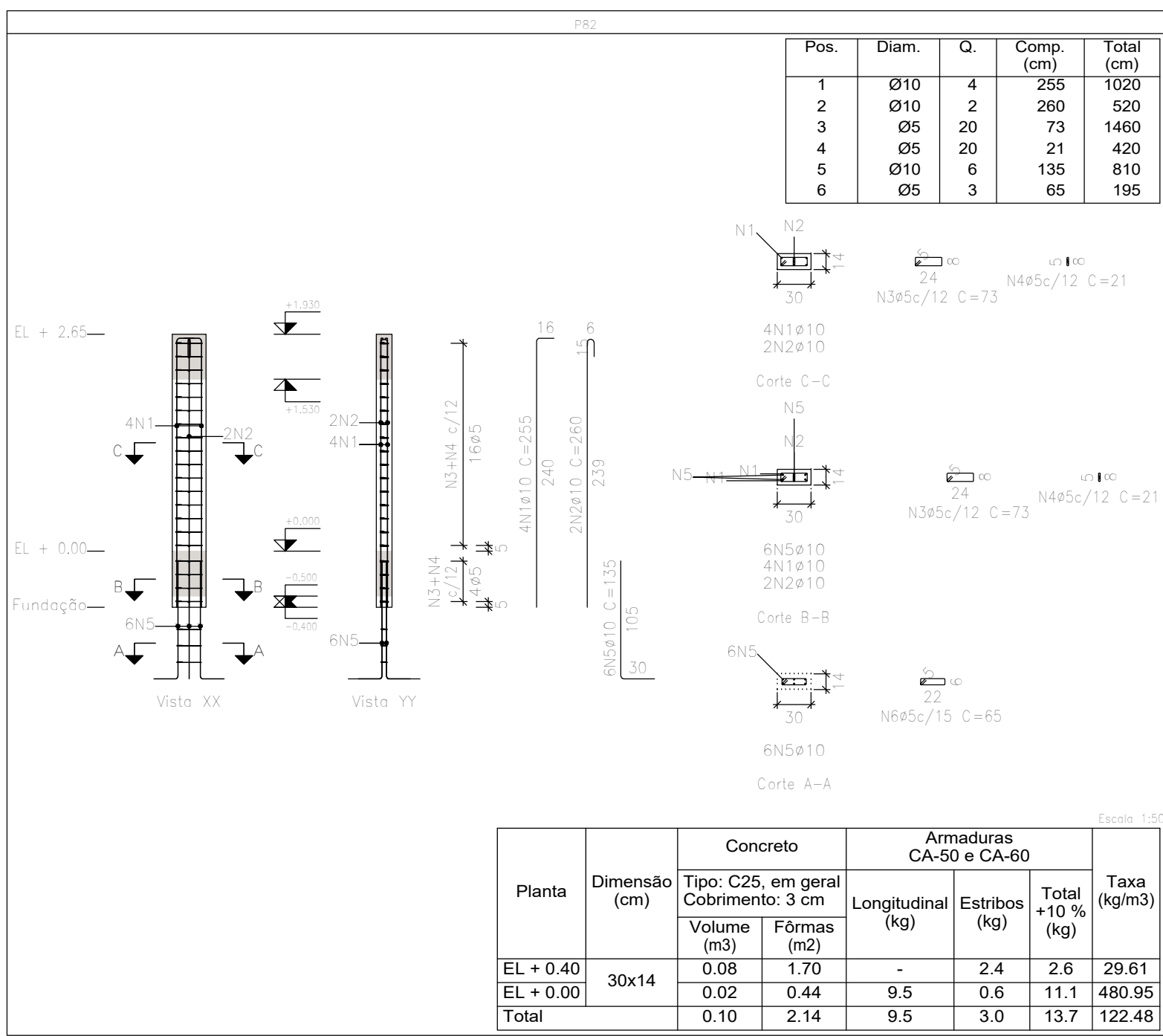
Planta	Dimensão (cm)	Concreto		Armaduras CA-50 e CA-60		Taxa (kg/m3)
		Tipo: C25, em geral	Cobrimento: 3 cm	Longitudinal (kg)	Estribos (kg)	
EL + 7.80	15x25	0.04	0.80	3.5	0.8	4.7
EL + 6.80		0.13	2.72	9.4	2.9	13.5
EL + 0.40		0.13	2.72	2.9	3.2	22.75
EL + 0.00		0.02	0.40	10.6	0.4	12.1
Total		0.31	6.64	23.4	6.9	33.5



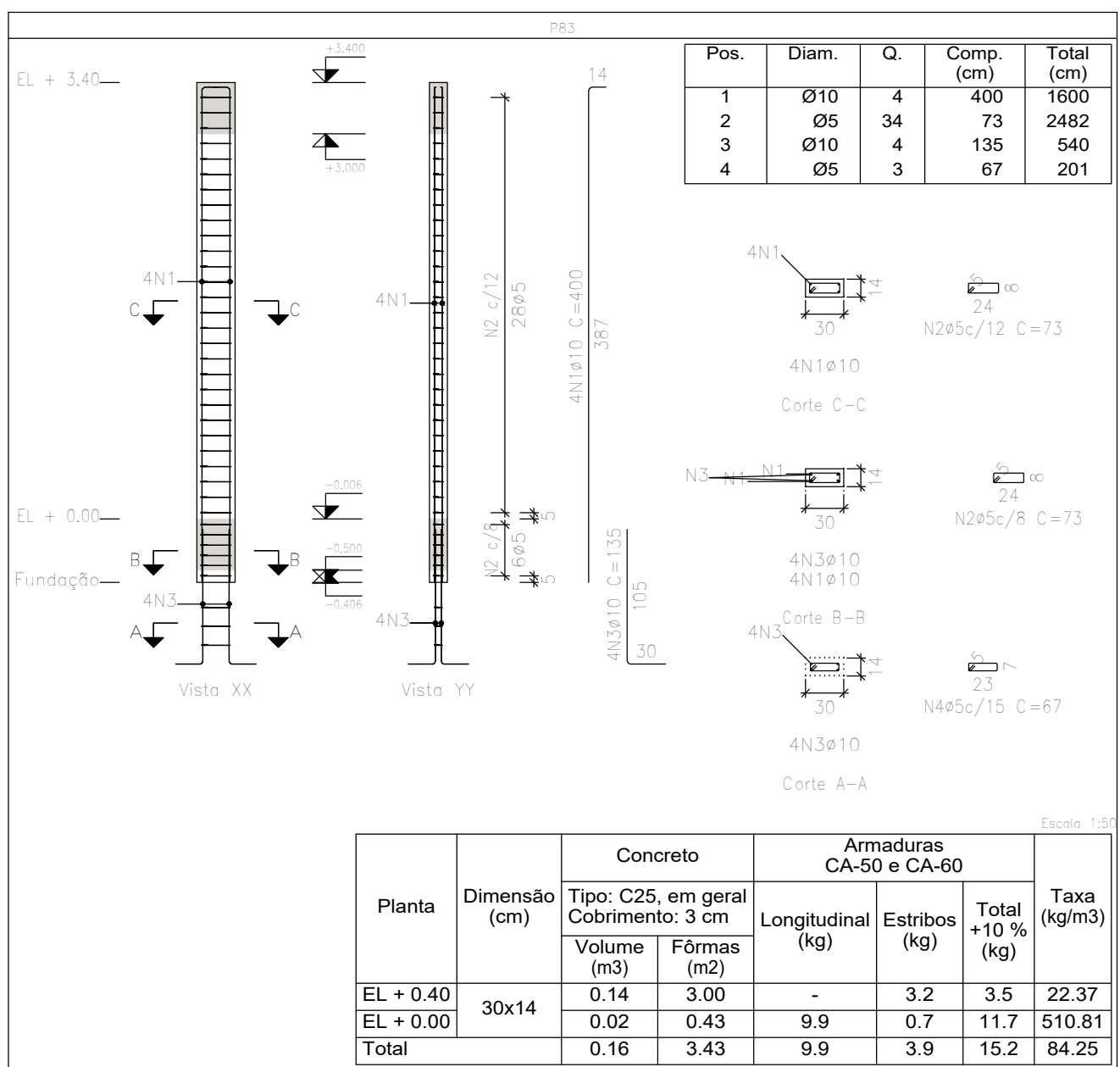
Aço: CA-50 e CA-60 (13.4 kg). Taxa: 145.36 kg/m3	Planta: EL + 0.00, EL + 1.15
Concreto: C25, em geral (0.08 m3)	Escala: 1:50
Fôrmas: 1.75 m2	



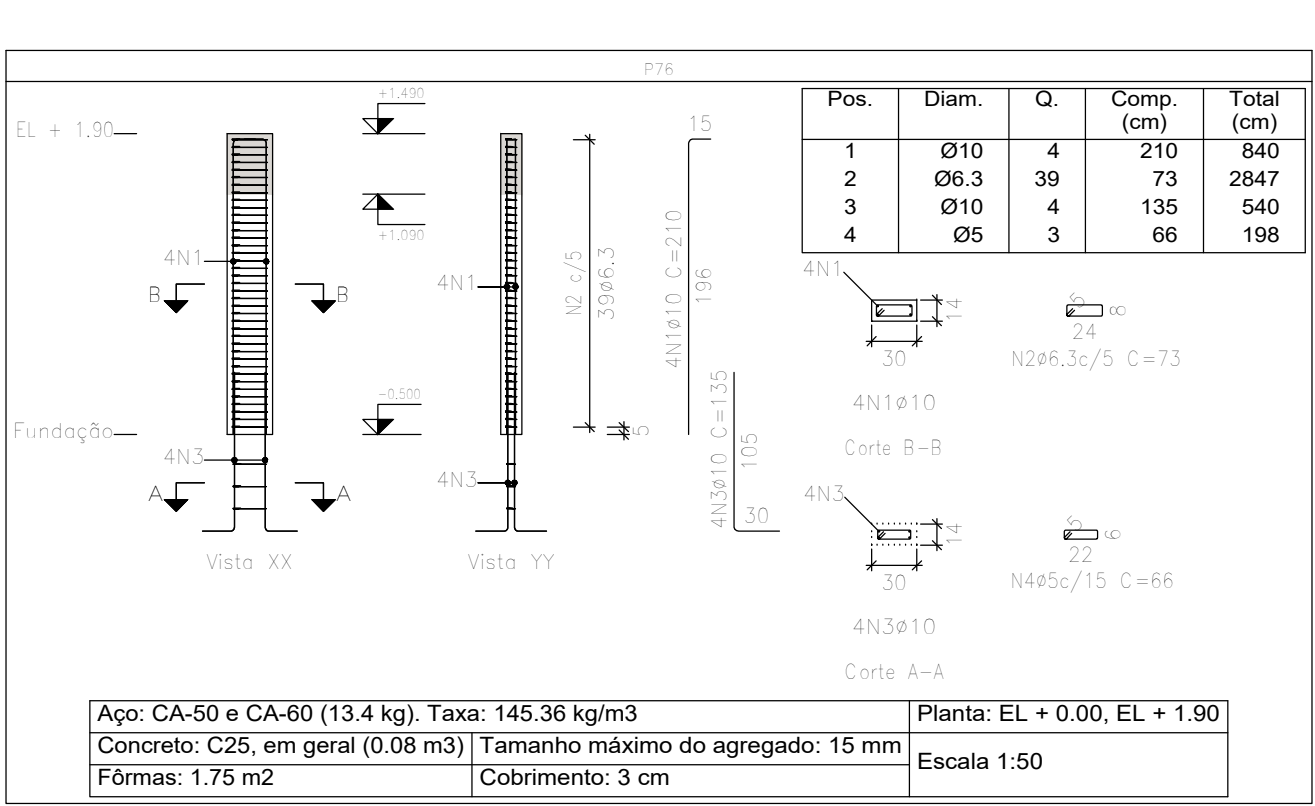
Aço: CA-50 e CA-60 (15.5 kg). Taxa: 301.76 kg/m3	Planta: EL + 0.00, EL + 0.40
Concreto: C25, em geral (0.05 m3)	Escala: 1:50
Fôrmas: 0.98 m2	



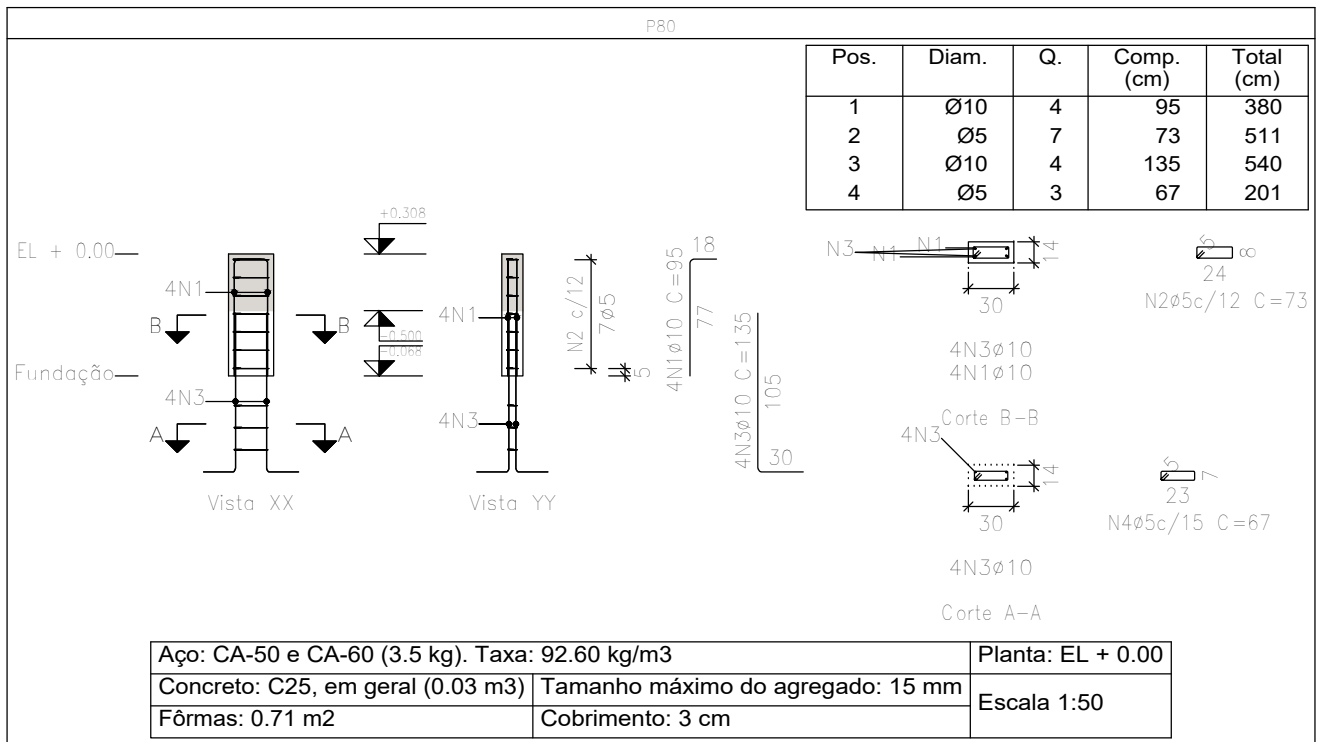
Planta	Dimensão (cm)	Concreto		Armaduras CA-50 e CA-60		Taxa (kg/m3)
		Tipo: C25, em geral	Cobrimento: 3 cm	Longitudinal (kg)	Estribos (kg)	
EL + 0.40	30x14	0.08	1.70	-	2.4	29.61
EL + 0.00		0.02	0.44	9.5	0.6	11.1
EL + 0.00		0.02	0.44	9.5	0.6	11.1
Total		0.10	2.14	9.5	3.0	13.7



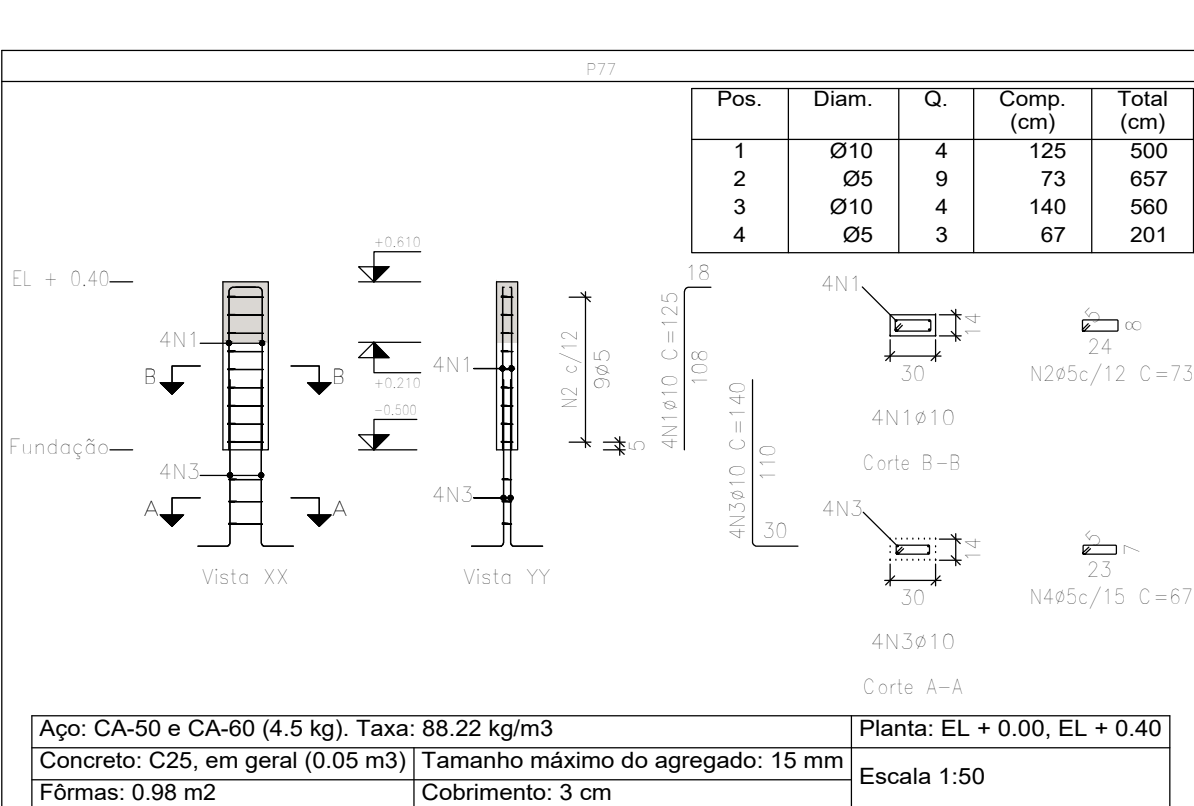
Planta	Dimensão (cm)	Concreto		Armaduras CA-50 e CA-60		Taxa (kg/m3)
		Tipo: C25, em geral	Cobrimento: 3 cm	Longitudinal (kg)	Estribos (kg)	
EL + 0.40	30x14	0.14	3.00	-	3.2	3.5
EL + 0.00		0.02	0.43	9.9	0.7	11.7
EL + 0.00		0.02	0.43	9.9	0.7	11.7
Total		0.16	3.43	9.9	3.9	15.2



Aço: CA-50 e CA-60 (13.4 kg). Taxa: 145.36 kg/m3	Planta: EL + 0.00, EL + 1.90
Concreto: C25, em geral (0.08 m3)	Escala: 1:50
Fôrmas: 1.75 m2	



Aço: CA-50 e CA-60 (3.5 kg). Taxa: 92.60 kg/m3	Planta: EL + 0.00
Concreto: C25, em geral (0.03 m3)	Escala: 1:50
Fôrmas: 0.71 m2	



Aço: CA-50 e CA-60 (4.5 kg). Taxa: 88.22 kg/m3	Planta: EL + 0.00, EL + 0.40
Concreto: C25, em geral (0.05 m3)	Escala: 1:50
Fôrmas: 0.98 m2	

OBSERVAÇÕES

- DIMENSÕES EM CENTÍ